



Good food, Good life

Nestlé Nigeria PLC RC 6540

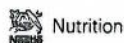
22-24 Industrial Avenue, Ilupeju  
P.M.B. 21164 Ikeja, Nigeria  
TEL: +234 (01) 279 8184  
+234 (01) 460 7688

# **ALLIANCE FOR WATER STEWARDSHIP CERTIFICATION**

## **STEP 5: COMMUNICATE AND DISCLOSE**

DIRECTORS:

Chairman - D. C. Ifezulike, MD/CEO - W. Elhousseini (Labanese), S. Saleem (Pakistani), I. Ipinmoye, M. Alarcon (Mexican), M. Kruegel (German), G. Oyebode, J. Ehimuan (Ms.), A. Lamikanra (Mrs.)



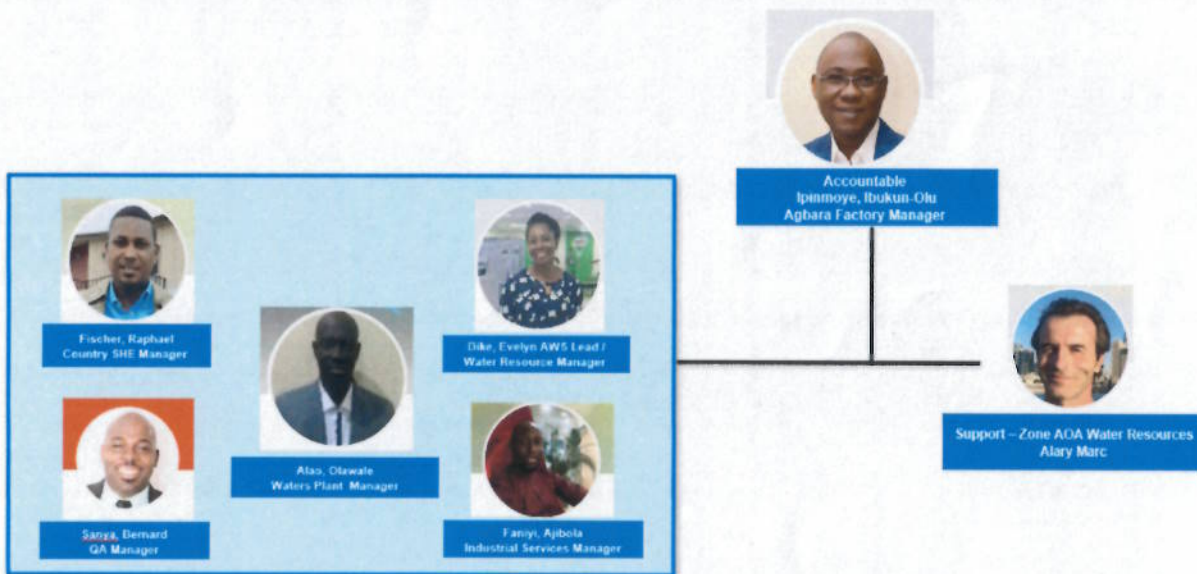


Good food, Good life

Nestlé Nigeria PLC RC 6540

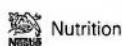
22-24 Industrial Avenue, Ilupeju  
P.M.B. 21164 Ikeja, Nigeria  
TEL: +234 (01) 279 8184  
+234 (01) 460 7688

## AGBARA FACTORY WATER- RELATED INTERNAL GOVERNANCE



### DIRECTORS:

Chairman - D. C. Ifezulike, MD/CEO - W. Elhusseini (Labanese), S. Saleem (Pakistani), I. Ipinmoye, M. Alarcon (Mexican), M. Kruegel (German), G. Oyeboade, J. Ehimuan (Ms.), A. Lamikanra (Mrs.)





Good food, Good life

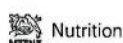
## Nestlé Nigeria PLC RC 6540

22-24 Industrial Avenue, Ilupeju  
P.M.B. 21164 Ikeja, Nigeria  
TEL: +234 (01) 279 8184  
+234 (01) 460 7688

S/N	Role	Responsibilities
1.	Factory Manager	<ul style="list-style-type: none"> <li>Accountable for legal and regulatory compliance and AWS for the factory</li> </ul>
2.	Plant Manager (Waters)	<ul style="list-style-type: none"> <li>Responsible for the day-to-day of the bottled water production</li> <li>Sponsor of the AWS certification audit</li> </ul>
3.	Country SHE Manager	<ul style="list-style-type: none"> <li>Responsible for assessing and evaluating compliance to water-related legal and regulatory compliance</li> <li>Maintains relations with relevant regulatory agencies</li> <li>Coordinate the submission of quarterly wastewater analysis reports to the relevant regulatory agencies.</li> <li>Report any water-related violation and/or incidents on the Nestle SHE reporting tool and to the relevant government agency</li> </ul>
4	Industrial Service Manager	<ul style="list-style-type: none"> <li>Responsible for water withdrawal, storage and treatment to specified parameters</li> <li>Responsible for water distribution within the factory</li> <li>Responsible for well monitoring</li> <li>Responsible for the management and monitoring of the Wastewater Treatment Plant.</li> </ul>
5	Quality Assurance Manager	<ul style="list-style-type: none"> <li>Responsible for the quality monitoring of both raw and product water</li> <li>Responsible for food safety and hygiene</li> </ul>
6	AWS Lead/WR Manager	<ul style="list-style-type: none"> <li>Responsible for driving factory Water Stewardship/AWS</li> <li>Responsible for water abstraction and well monitoring of the well for bottling water</li> <li>Responsible for CRP 3.0 implementation</li> </ul>
7.	Z-AOA Water Resource Manager	<ul style="list-style-type: none"> <li>Support factory in water resource management and Water Stewardship</li> </ul>

### DIRECTORS:

Chairman - D. C. Ifezulike, MD/CEO - W. Elhousseini (Labanese), S. Saleem (Pakistani). I. Ipinmoye, M. Alarcon (Mexican), M. Kruegel (German), G. Oyebode, J. Ehimuan (Ms.), A. Lamikanra (Mrs.)



The Healthy Hydration Company



Good food, Good life

Nestlé Nigeria PLC RC 6540

22-24 Industrial Avenue, Ilupeju  
P.M.B. 21164 Ikeja, Nigeria  
TEL: +234 (01) 279 8184  
+234 (01) 460 7688

## WATER STEWARDSHIP PLAN

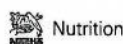
Our water stewardship strategy in Nestle Nigeria Plc (Agbara Factory) considers all key components: physical components (hydrogeology, recharge area, catchment, and surface waters), but also local governance (authorities, management of water, government policy and organization...), concerns and expectations from local communities, identified challenges related to water quantity, water quality, important water related areas, and of course the factory operations. Hence, our strategy is about developing relevant actions on site, but also outside the fence of our factory.

We have made efforts to align our water stewardship plan with the five (5) outcomes of the Alliance for Water Stewardship (AWS) standard which include good water governance, sustainable water balance, good water quality status, Important Water Related Areas and Safe Water, Sanitation and hygiene for all (WASH).

Our Water Stewardship plan has actions both at the site level and catchment level aimed at addressing identified shared water challenges, risks and opportunities with the Agbara catchment. These actions include water usage reduction, well monitoring, wastewater monitoring, and access to WASH facilities at the site level.

DIRECTORS:

Chairman - D. C. Ifezulike, MD/CEO - W. Elhousseini (Labanese), S. Saleem (Pakistani), I. Ipinmoye, M. Alarcon (Mexican), M. Kruegel (German), G. Oyeboade, J. Ehimuan (Ms.), A. Lamikanra (Mrs.)



The Healthy Hydration Company



Good food, Good life

Nestlé Nigeria PLC RC 6540

22-24 Industrial Avenue, Ilupeju  
P.M.B. 21164 Ikeja, Nigeria  
TEL: +234 (01) 279 8184  
+234 (01) 460 7688

Additionally, at catchment level, actions are targeted at collective action through advocacy and awareness working with relevant government agencies in addressing water quantity, water quality, protection of Important Water Related Areas (e.g. Ologe lagoon) and access to clean water, hygiene and sanitation.

## AGBARA FACTORY WATER STEWARDSHIP PERFORMANCE

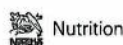
In measuring our Water stewardship journey, we use performance indicators (qualitative and quantitative) to show progress that is being made.

### Shared Water challenges, risks and opportunities in Agbara catchment

	Actions at Site/Catchment levels	Performance Indicators
Sustainability of water resource (water quantity)	Water efficiency 2% reduction in water consumption by end of 2022	<b>17,266 cubic metres</b> of water saved through water-saving projects thereby reducing water abstracted for production activities
Wastewater management (water quality)	Wastewater treatment/monitoring	<b>Wastewater monitoring parameters</b> Wastewater from our processes are treated and monitored to ensure strict adherence to set regulatory limits. Results of monthly analysis submitted to the regulatory agency as specified by the law,
Lack of access to safe drinking water (WASH)	Provision of safe drinking water	<b>WASH</b> Safe drinking provided for local population both at the factory's entrance gates and nearby community.
Opportunity for collective action within the catchment	Stakeholders' engagement and collaboration	<b>Collective action</b> We continue to engage and collaborate with relevant stakeholders including the public sector to explore opportunities to address shared water-related challenges within the catchment through advocacy and awareness.

### DIRECTORS:

Chairman - D. C. Ifezulike, MD/CEO - W. Elhousseini (Labanese), S. Saleem (Pakistani), I. Ipinmoye, M. Alarcon (Mexican), M. Kruegel (German), G. Oyeboade, J. Ehimuan (Ms.), A. Lamikanra (Mrs.)



The Healthy Hydration Company



Good food, Good life

Nestlé Nigeria PLC RC 6540

22-24 Industrial Avenue, Ilupeju  
P.M.B. 21164 Ikeja, Nigeria  
TEL: +234 (01) 279 8184  
+234 (01) 460 7688

## **EFORTS TO COLLECTIVELY ADDRESS SHARED WATER CHALLENGES**

We as Nestle recognises that water is a shared resource, so caring for it must be through joint collaborative actions, and we are always seeking out opportunities to engage and collaborate with stakeholders both in the public and private sectors to address shared water challenges within the Agbara catchment.

The annual World Water Day celebration provides the avenue for partnership with the state government agency alongside other industries to highlight these shared water challenges and take actions to address.

In 2022, we partner with the Ogun State Ministry of Environment in creating awareness around the World Water Day theme for the year and panel discussions with follow-up actions. Same was done in this year for the World Water Day celebration of March 22<sup>nd</sup>, 2023.

Additionally, as part of the factory's World Water Day 2023 activities, we hosted over 80 children from private and public schools around Agbara for an educational tour and campaign, educating them on water stewardship and encouraging them to act in their own lives to change the way they use, consume and manage water, promoting the development of responsible habits from an early age.

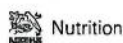


IPINMOYE Ibukun-Olu

Factory Manager

DIRECTORS:

Chairman - D. C. Ifezulike, MD/CEO - W. Elhousseini (Labanese), S. Saleem (Pakistani), I. Ipinmoye, M. Alarcon (Mexican), M. Kruegel (German), G. Oyeboade, J. Ehimuan (Ms.), A. Lamikanra (Mrs.)



The Healthy Hydration Company