



Good food, Good life

Nestlé Nigeria PLC RC 6540

22-24 Industrial Avenue, Ilupeju
P.M.B. 21164 Ikeja, Nigeria
TEL: +234 (01) 279 8184
+234 (01) 460 7688

ALLIANCE FOR WATER STEWARDSHIP CERTIFICATION STEP 5: COMMUNICATE AND DISCLOSE

DIRECTORS:

Chairman - G. Oyebode, MD/CEO - W. Eihusseini (Lebanese), N. Mishra (Indian), I. Ipinmoye, M. Aiarcon (Mexican), M. Kruegel (German), J. Ehimuan (Ms.), A. Lamikanra (Mrs.), M. Mohammed (Mrs.)



The Healthy Hydration Company

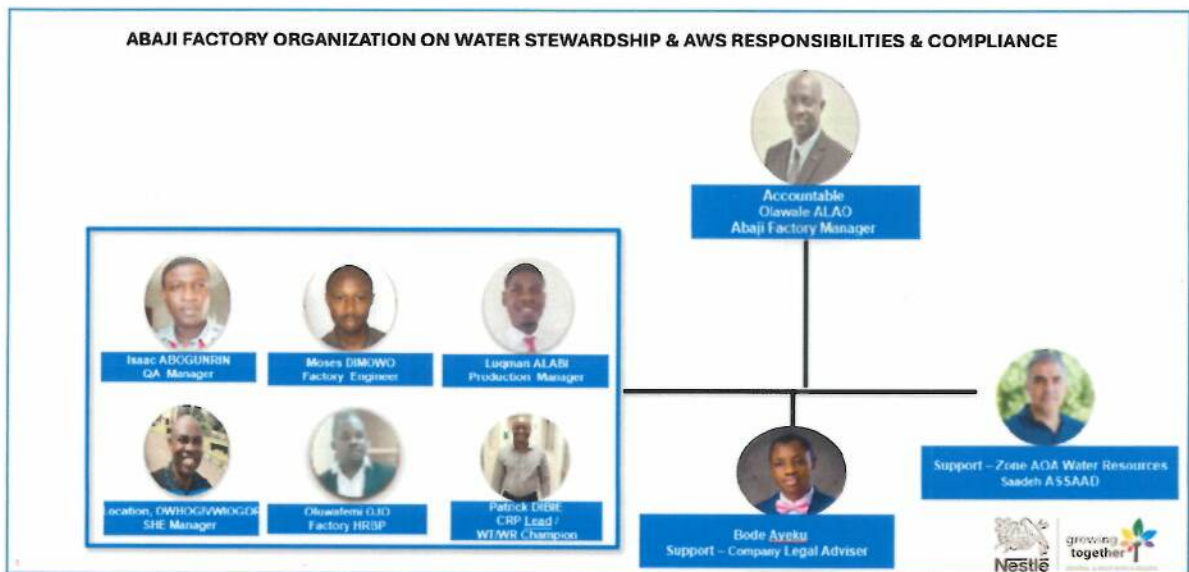


Good food, Good life

Nestlé Nigeria PLC RC 6540

22-24 Industrial Avenue, Ilupeju
P.M.B. 21164 Ikeja, Nigeria
TEL: +234 (01) 279 8184
+234 (01) 460 7688

ABAJI FACTORY WATER-RELATED INTERNAL GOVERNANCE



DIRECTORS:
Chairman - G. Oyeboade, MD/CEO - W. Elhousseini (Lebanese), N. Mishra (Indian), I. Ipinmoye, M. Alarcon (Mexican), M. Kruegel (German), J. Ehinuan (Ms.), A. Lamikanra (Mrs.), M. Mohammed (Mrs.)



The Healthy Hydration Company



Good food, Good life

Nestlé Nigeria PLC RC 6540

22-24 Industrial Avenue, Ilupeju
P.M.B. 21164 Ikeja, Nigeria
TEL: +234 (01) 279 8184
+234 (01) 460 7688

S/N	Role	Responsibilities
1.	Factory Manager	<ul style="list-style-type: none"> Accountable for legal and regulatory compliance and AWS for the factory
2.	Production Manager	<ul style="list-style-type: none"> Responsible for the day-to-day of the bottled water production Sponsor of the AWS certification audit
3.	SHE Manager	<ul style="list-style-type: none"> Responsible for assessing and evaluating compliance to water-related legal and regulatory compliance Maintains relations with relevant regulatory agencies Coordinate the submission of quarterly wastewater analysis reports to the relevant regulatory agencies. Report any water-related violation and/or incidents on the Nestle SHE reporting tool and to the relevant government agency. Number to call in case of any water related incident: 08141374325
4.	Factory Engineer	<ul style="list-style-type: none"> Maintenance and management of the water resource equipment (Deep well and other facilities) Maintenance and management of water distribution network within the factory
5.	Quality Assurance Manager	<ul style="list-style-type: none"> Responsible for the quality monitoring of both raw and product water Responsible for food safety and hygiene Responsible for the management and monitoring of the Wastewater Treatment Plant
6.	HRBP	<ul style="list-style-type: none"> Responsible for the coordination and management of community projects. Responsible for CRP 3.) implementation
7.	CRP Lead/WT/WR Champion	<ul style="list-style-type: none"> Responsible for driving factory Water Stewardship/AWS Responsible for water abstraction and well monitoring of the well for bottling water Responsible for CRP 3.) implementation
8.	Z-ADA Water Resource Manager	<ul style="list-style-type: none"> Support factory in water resources management and CRP
9.	Company Legal Adviser (HO)	<ul style="list-style-type: none"> Responsible for communicating any change / update on water-related regulations Responsible for tracking and verifying compliance to water related regulations



DIRECTORS:
Chairman - G. Oyebode, MD/CEO - W. Elhousseini (Lebanese), N. Mishra (Indian), I. Ipinmoye, M. Alarcon (Mexican), M. Kruegel (German), J. Ehinuan (Ms.), A. Lamikanra (Mrs.), M. Mohammed (Mrs.)



The Healthy Hydration Company



Good food, Good life

Nestlé Nigeria PLC RC 6540

22-24 Industrial Avenue, Ilupeju
P.M.B. 21164 Ikeja, Nigeria
TEL: +234 (01) 279 8184
+234 (01) 460 7688

WATER STEWARDSHIP PLAN

Water is a vital component of our manufacturing processes, and it is also a precious shared resource which is under pressure both globally and locally. Managing our impact on water and being good stewards of this essential resource, is therefore an important part of our Corporate Business Principles and Sustainability priorities.

At Nestlé Nigeria PLC, our water stewardship strategy is not only about developing relevant actions on site, but also includes actions outside our factories. We have adopted the Alliance for Water Stewardship's definition of Water Stewardship - "The use of water that is socially and culturally equitable, environmentally sustainable, and economically beneficial, achieved through a stakeholder-inclusive process that includes both site and catchment-based actions." This is why our water stewardship plan is aligned with the five (5) outcomes of the Alliance for Water Stewardship (AWS) standard comprising of good water governance, sustainable water balance, good water quality status, Important Water Related Areas and Safe Water, Sanitation, and hygiene for all (WASH).

At the Abaji Factory, we drive actions both at the site level and catchment area level aimed at addressing identified shared water challenges, risks, and opportunities within the catchment. These actions include water use efficiency, water level monitoring, water quality monitoring, wastewater monitoring, and providing access to WASH facilities at both site and catchment levels.

Additionally, at catchment level, actions are targeted at driving collective actions through advocacy and awareness; working with relevant government agencies to address water quantity, water quality, protection of Important Water Related Areas (e.g, Manderigi Stream) and access to clean water, hygiene, and sanitation.

DIRECTORS:
Chairman - G. Oyeboade, MD/CEO - W. Elhousseini (Lebanese), N. Mishra (Indian), I. Ipinmoye, M. Alarcon (Mexican), M. Kruegel (German), J. Ehinuan (Ms.), A. Lamikanra (Mrs.), M. Mohammed (Mrs.)



The Healthy Hydration Company



Good food, Good life

Nestlé Nigeria PLC RC 6540

22-24 Industrial Avenue, Ilupeju
P.M.B. 21164 Ikeja, Nigeria
TEL: +234 (01) 279 8184
+234 (01) 460 7688

ABAJI FACTORY WATER STEWARDSHIP PERFORMANCE

At the Abaji Factory, we have made significant progress in our Water stewardship journey since our initial certification to Alliance for Water Stewardship (AWS) standard in 2023. Our water stewardship efforts are driven by relevant performance indicators (qualitative and quantitative) to show progress that is being made.

Between 2022 and 2023, the priorities in our water stewardship plan included onsite water use efficiency, compliance to wastewater discharge parameters, provision of access to safe drinking and driving collective actions within our catchment.

- **Improved water use efficiency:** we reduced water consumption in our operations by 8,719 m³ of water through water saving projects and have included reuse of treated effluent in system to further reduce our water abstraction. (Sustainable Water Balance)
- **Access to clean drinking water:** we have continued to provide clean drinking water to local communities near our factory and water supply facilities are open to the local communities all year around. We have also provided 48 clean water fetching points, two (2) sanitation and hygiene facilities for schools in Manderigi and Abaji. (WASH)

DIRECTORS:
Chairman - G. Oyebode, MD/CEO - W. Elhousseini (Lebanese), N. Mishra (Indian), I. Ipinmoye, M. Alarcon (Mexican), M. Kruegel (German), J. Ehinuan (Ms.), A. Lamikanra (Mrs.), M. Mohammed (Mrs.)



The Healthy Hydration Company



Good food, Good life

Nestlé Nigeria PLC RC 6540

22-24 Industrial Avenue, Ilupeju
P.M.B. 21164 Ikeja, Nigeria
TEL: +234 (01) 279 8184
+234 (01) 460 7688

- **Discharge wastewater safely and in compliance with water-related regulatory and Nestlé water quality requirements:** Process wastewater from our operations is treated to comply with national and internal wastewater standards; and set discharge does not harm receiving water body. (Good Water Quality & IWRA)
- **Stakeholders' engagement and collaboration:** we continue to explore opportunities for collective action to address shared water related challenges such as water quantity, wastewater management etc. within our catchment through advocacy and creating awareness on the criticality of water.
(Good Water Governance)

DIRECTORS:
Chairman - G. Oyebode, MD/CEO - W. Elhousseini (Lebanese), N. Mishra (Indian), I. Ipinmoye, M. Alarcon (Mexican), M. Kruegei (German), J. Ehimuen (Ms.), A. Lamikanra (Mrs.), M. Mohammed (Mrs.)



The Healthy Hydration Company



Good food, Good life

Nestlé Nigeria PLC RC 6540

22-24 Industrial Avenue, Ilupeju
P.M.B. 21164 Ikeja, Nigeria
TEL: +234 (01) 279 8184
+234 (01) 460 7688

EFFORTS TO COLLECTIVELY ADDRESS SHARED WATER CHALLENGES

Collaborating with relevant stakeholders in both the public and private sectors is a vital part of our water stewardship journey in creating awareness about this precious shared resource – water.

- The annual World Water Day celebration provides the avenue for partnership with the state government, its agencies and other industry stakeholders to highlight these shared water challenges and take actions to address.

We partnered with the Rural Water Supply and Sanitation Agency (RUWASSA) in creating awareness around the World Water Day 2023 theme for the year and we hosted 80 children from private and public schools in Abaji for an educational tour and campaign, educating them on water stewardship, promoting the development of responsible habits from an early age.

- In September 2023, Nestle Nigeria PLC, Abaji Factory launched the Employee Plastic Scheme, an initiative towards protecting the environment for future generations and in line with our vision that none of our packaging, including plastics end up in the landfills, rivers and oceans.

Alao Olawale

Factory Manager

DIRECTORS:
Chairman - G. Oyeboade, MD/CEO - W. Elhousseini (Lebanese), N. Mishra (Indian), I. Ipinmoye, M. Alarcon (Mexican), M. Kruegel (German), J. Ehimuan (Ms.), A. Lamikanra (Mrs.), M. Mohammed (Mrs.)



The Healthy Hydration Company